



MAUI ENERGY

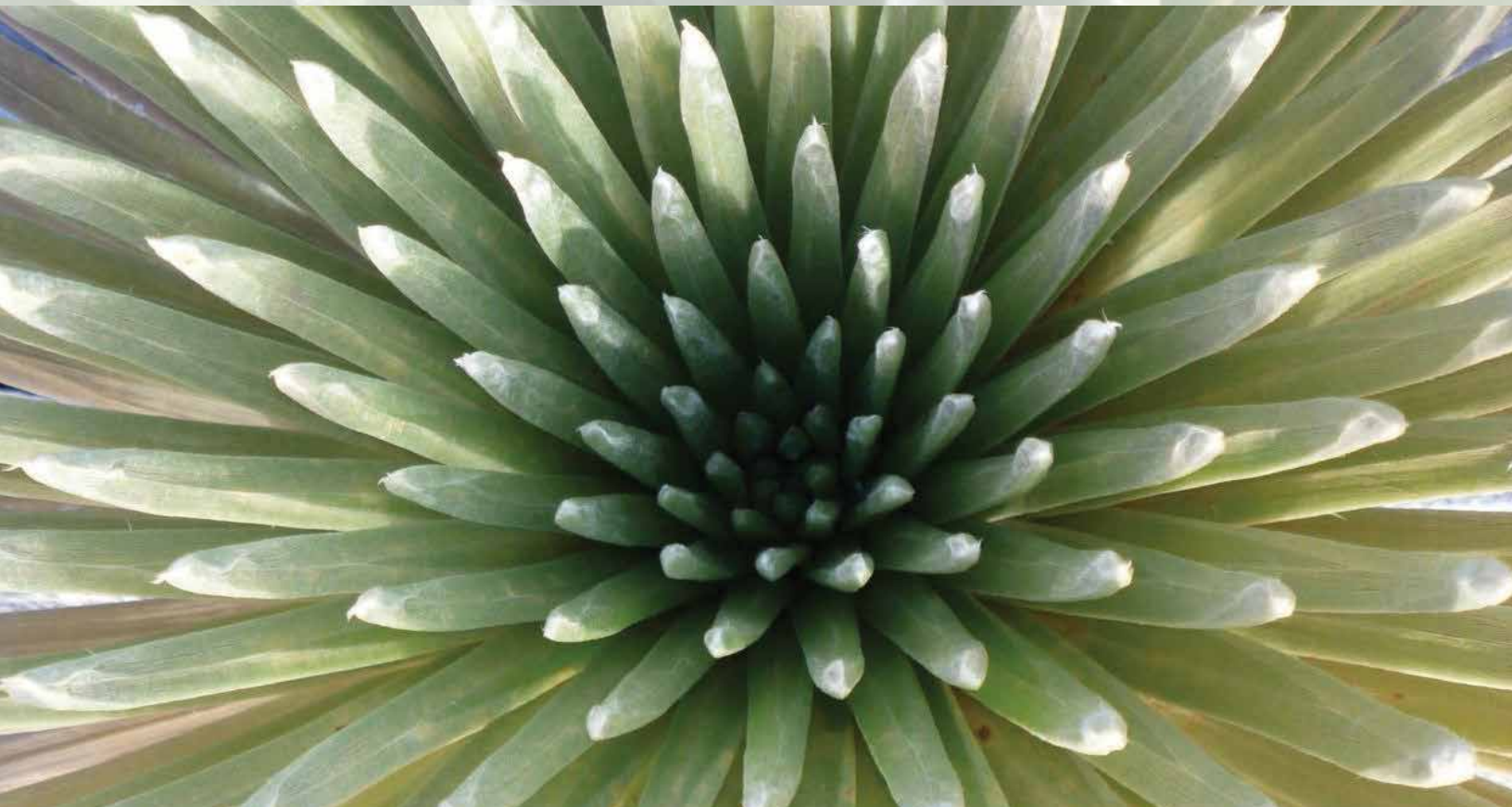
Conference + Exhibition

PROGRAM

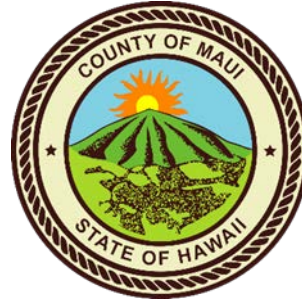


March 16-18, 2016 | Maui Arts & Cultural Center

SHAPING MAUI COUNTY'S ENERGY FUTURE!



**MAYOR'S OFFICE OF
ECONOMIC
DEVELOPMENT
MAUI COUNTY**



OFFICE OF THE MAYOR

County of Maui
200 South High Street
Wailuku, Maui, Hawaii 96793

A MESSAGE FROM MAYOR ALAN M. ARAKAWA

Aloha Kākou,

On behalf of the people of Maui County, it is my pleasure to welcome you to the 2016 Maui Energy Conference! Our Mayor's Office of Economic Development and the Maui Economic Development Board are proud to present this year's event, which focuses on the Hawaii Clean Energy Initiative's 100% Renewable Portfolio Standard and its implications for Hawaii's energy future: addressing not just the when, but also the how, where, why and who pays.

Over the next two days you will have the opportunity to attend panels with nationally recognized experts, explore the various products and services displayed in our exhibits hall and interact with individuals and businesses from across the country.

Whether you are an energy customer, enthusiast, policymaker or businessperson, your participation in the Maui Energy Conference is and always will be a big part of its success. We appreciate you coming to Maui to share what is working in your home locations and look forward to learning about new policy and practices that can help us navigate the rapidly changing environment in energy production and delivery.

We gratefully acknowledge the many partners and sponsors whose generous contributions have helped bring this conference back for a third year. A special mahalo to the Maui Arts & Cultural Center for again hosting us in this beautiful venue.

Best regards,

A handwritten signature in black ink, appearing to read "Alan Arakawa". The signature is fluid and cursive.

Alan M. Arakawa
Mayor, County of Maui



TERAwatt



ADMINISTERED BY LEIDOS®

EXHIBITORS

- 3D Builders & Design/Charge Bliss
- Aquion Energy
- Blue Planet Energy
- Center for Sustainable Energy (CSE)
- Hawaii Energy
- Hawaii Gas
- Hawaii Pacific Solar
- High Technology Development Corporation
- Hitachi Ltd.
- Maui Electric Company
- National Car Charging
- Open Access Technology International (OATI)
- Pacific Biodiesel Technologies
- Pacific Energy Alternatives/Optimized Energy Solutions
- Primo Wind
- Sempra Energy, U.S. Gas & Power
- sonnen, Inc.
- Ulupono Initiative
- UniEnergy Technologies

GIGAwatt

Hawaiian Electric
Maui Electric
Hawai'i Electric Light



MEGAwatt



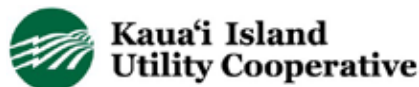
KILOwatt



HITACHI
Inspire the Next



MICROWatt



MAUI BREWING CO.



MAHALO TO OUR SPONSORS & EXHIBITORS



7:00 AM

REGISTRATION | **Founders Courtyard**



CONTINENTAL BREAKFAST | **Founders Courtyard**

8:00

BLESSING & OPENING | **Castle Theater**

Reverend Kealahou Alikea, Keawala'i Congregational Church

E KOMO MAI (WELCOME)

Teena Rasmussen, Economic Development Director, Maui County

Jeanne Unemori Skog, President & CEO, Maui Economic Development Board, Inc.

REMARKS

Alan Arakawa, Mayor, County of Maui

8:20

KEYNOTE ADDRESS

Introduction by Doug McLeod, Chair, Conference Program Committee

Powering Forward: What Everyone Should Know About America's Renewable Energy Revolution

Governor Bill Ritter Jr., Founder and Director, Center for the New Energy Economy (CNEE), Colorado State University; and former Governor of Colorado

8:45

INVITED PRESENTATION

An IDSO: The Path to Moving Forward to 100% Renewable Energy

Jon Wellinghoff, Energy Law Attorney, Stoel Rives LLP and former Chairman, Federal Energy Regulatory Commission (FERC)

9:10

Discussion and Q&A with Governor Ritter and Jon Wellinghoff

Facilitated by Doug McLeod, Chair, Conference Program Committee; and Jay Griffin, Chief of Policy and Research, Hawaii Public Utilities Commission

9:30



COFFEE BREAK AND EXHIBIT SESSION | **Morgado Hall**

Sponsored by Hawaii Gas, LLC

10:00

DEFINING 100% RENEWABLES | Castle Theater

The legislature defined what qualifies as "renewable energy" in Hawaii, circa 2008. The panel will explore what should be considered renewable, the resource mix that best meets customer energy needs, and whether the underlying policy goals still make sense.

Moderated by:

Kyle Datta, General Partner, Ulupono Initiative

David Bissell, CEO, Kauai Island Utility Coop

Greg Callman, Business Development & Market Entry, Tesla Energy

Shelee Kimura, Vice President, Corporate Planning & Business Development, Hawaiian Electric Company

Alicia Moy, President & CEO, Hawaii Gas



11:30 AM



LUNCH | Founders Courtyard

Sponsored by Hawaii State Energy Office, Department of Business, Economic Development and Tourism (DBEDT)

EXHIBIT SESSION AND DESSERT | Morgado Hall

1:00

COMMUNITY ACCEPTANCE OF 100% RENEWABLES

Have things changed within our communities to embrace the placement and deployment of renewable energy resources? What are the cultural and indigenous concerns of the community and how best can they be addressed?

Moderated by:

William Aila Jr., Deputy Director, Department of Hawaiian Home Lands (DHHL), and former Head of the Department of Land and Natural Resources (DLNR)

James Gomes, Operations Manager, Ulupalakua Ranch

Richard Ha, Co-founder, Hawaii Island Energy Cooperative

Emillia Noordhoek, Executive Director, Sustainable Molokai

2:30



COFFEE BREAK | Morgado Hall

Sponsored by High Technology Development Corporation

3:00

VIDEO PRESENTATION: "Word on the Street"

THE SOCIAL IMPACTS OF PURSUING A 100% RENEWABLE FUTURE

The panel will explore the risks and rewards associated with a renewable energy future and attempt to answer the question who pays and who benefits? Is there an energy consumer fairness issue that needs to be addressed? What can utilities do to reduce and/or eliminate volatility of energy supply and pricing? Is rate stabilization a worthy goal?

Moderated by:

Hermína Morita, Energy Dynamics, and former Chair of the Hawaii PUC

Jim Alberts, Senior Vice President Customer Service at Hawaiian Electric Company

Olin Lagon, Chief Executive Officer, Shifted Energy

Kris Mayes, Senior Sustainability Scholar, Arizona State University

Craig Swift, Director, Maui Economic Opportunity, Inc.

4:30

SPECIAL PRESENTATION

The Guernsey Report: An Analysis of Alternative Utility Models for Maui County

Jared Stigge, Vice President, C.H. Guernsey & Company

Discussion and Q&A

Facilitated by Dawn Lippert, Co-founder and Director, Energy Excelsior; and Mark Wight, Managing Director Marketing & Strategy, GE Ventures

5:00 -
6:30 PM

NETWORKING RECEPTION | Morgado Hall



On the road to clean energy, we're putting
EFFICIENCY FIRST.



Hawaii Energy

YOUR CONSERVATION & EFFICIENCY PROGRAM

HawaiiEnergy.com

Providing Smart Grid Infrastructure
Services and Technologies Needed to
Ensure Hawaii's Clean Energy Future



leidos

ENGINEERING

leidos.com/engineering



7:00 AM

REGISTRATION | Founders Courtyard



CONTINENTAL BREAKFAST | Founders Courtyard

7:30

INQUIRING MINDS WANT TO KNOW: EDUCATING TOWARD 100% RENEWABLE ENERGY | Castle Theater

How do we educate and prepare Hawaii's citizens - young and old - for a 100% renewable energy future? This panel will discuss educational efforts that span a broad spectrum of issues and opportunities.

Moderated by:

Leslie Wilkins, Vice President, Maui Economic Development Board, Inc.**Michael Chang**, Chief Innovation Architect, Hawaii Energy**Alex de Roode**, Executive Director, Sustainable Living Institute of Maui**Brandon Hayashi**, Strategic Alliances Manager, OpTerra Energy Services Hawai'i

8:30

MID CONFERENCE REFLECTIONS FROM UTILITY DIVE AND THE PROGRAM COMMITTEE | Castle Theater

8:45

INVESTING IN HAWAII | Castle Theater

Finding investment solutions for Hawaii's 100% renewable energy future. The panel will explore how the regulatory and governmental framework helps or hinders energy development. Is Hawaii a Good Investment?

Moderated by:

Luis Salaveria, Director, Department of Business, Economic Development & Tourism, State of Hawaii**Lorraine Akiba**, Commissioner, Hawaii Public Utilities Commission**Boris von Bormann**, Chief Executive Officer, sonnen, Inc.**Murray Clay**, Managing Partner, Ulupono Initiative**Josh Teigiser**, Senior Project Developer for Renewables, Sempra U.S. Gas & Power

10:15



COFFEE BREAK AND EXHIBIT SESSION | Morgado Hall

Sponsored by Sempra U.S. Gas & Power

10:45

THE HAWAII RENEWABLE EXPERIENCE-WHAT CAN BE REPLICATED NATIONALLY AND INTERNATIONALLY? | Castle Theater

What distinguishes Hawaii as a renewable energy leader? The panel will explore the drivers to achieving 100% renewable in the electricity sector. What can be shared with the Mainland—lessons learned, traps to avoid? Can Hawaii and others learn from the European experience in deploying both utility scale renewables and DER. What policies and innovations developed in Hawaii can be replicated?

Moderated by:

Gavin Bade, Associate Editor, Utility Dive**Mike Champley**, Commissioner, Hawaii Public Utilities Commission**Mark Glick**, Hawaii State Energy Office Administrator, DBEDT**Colton Ching**, Vice President Energy Delivery, Hawaiian Electric Company



12:15 PM



LUNCH | Founders Courtyard

Sponsored by Hawaii Natural Energy Institute, University of Hawaii

EXHIBIT SESSION AND DESSERT | Morgado Hall

1:45

INTEGRATION OF DISTRIBUTED ENERGY RESOURCES | Castle Theater

In October and November, 2015, the Public Utilities Commission of Hawaii issued landmark orders that greatly affect the deployment of distributed energy resources (DER) and their contribution to the grid. The panel will explore the effects of these orders on customers, and their options going forward. What are the expectations on optimal resource mix between DER and utility scale renewable energy sources? Can DER bring to the utility electric system valuable grid support functions at a reasonable cost? Will customers who generate their own energy needs either on a grid supply or self-supply basis embrace the new DER policies?

Moderated by:

Sebastian (Bash) Nola, Utility Consultant

Mark Duda, President, Hawaii PV Coalition

Brendan Kirby, Consultant, Consult Kirby

Rick Rocheleau, Director, Hawaii Natural Energy Institute, University of Hawaii

3:15

BREAK

3:30

MAUI: A CASE STUDY – IS THIS WHERE WE'RE ALL HEADED? | Castle Theater

This panel will explore potential options for the best resource mix to achieve the 100% RPS on Maui, challenges and expectations, utility ownership structures, and timeframes to make it happen. All with a little help from our friends on the Big Island; Boulder, Colorado; and Maui's own utility. The potential opportunities and risks mirror discussions occurring nationwide.

Moderated by:

Frank De Rego Jr., Director of Business Development Projects, Maui Economic Development Board

Making the Case:

Jamie Cook, Director, Renewable Energy Projects, Maui Electric Company

Jonathan Koehn, Regional Sustainability Coordinator, City of Boulder

Marco Mangelsdorf, Co-founder, Hawaii Island Energy Cooperative

Maui Panel Responds:

Jennifer Chirico, Partner/President, Sustify Pacific

Kelly King, Vice President, Pacific Biodiesel Technologies, LLC

Doug McLeod, DKK Energy Services LLC

5:00

CLOSING

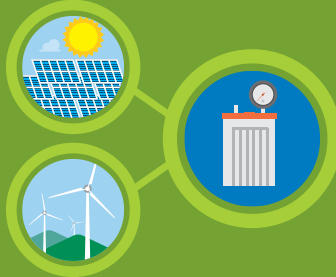
Teena Rasmussen and Jeanne Unemori Skog

On the path to 100% green energy, diversity is the key.



USING HAWAII'S DIVERSE RESOURCES

for energy helps to reduce our dependence on imported oil.



RENEWABLE ENERGY STORAGE AND MICROGRIDS

will provide backup for variable sources like wind and solar. This will help provide reliable service for everyone.



SMART METERS AND DEMAND RESPONSE OPTIONS

will allow customers to play a role in the operations of the electric grid by reducing or shifting their electricity use.

100%

These efforts will help lower customers' energy bills and achieve the state's 100 percent Renewable Portfolio Standard by 2045.



Hawaiian Electric
Maui Electric
Hawai'i Electric Light

hawaiianelectric.com/ourvision



FRIDAY | March 18 Optional Maui Sustainability Mobile Workshops

Tours are scheduled from 9:00 a.m. to 12:00 p.m. and will depart from the Maui Arts & Cultural Center. Participants are asked to please check-in 15 minutes prior. Registered conference participants may sign-up for the tours onsite, based on availability.



Kaheawa Wind Farm | Hosted by SunEdison

Nestled on the ridgeline of the West Maui Mountains, Kaheawa Wind is a two-phase 51 MW wind project. Kaheawa Wind is harnessing Maui's sustainable wind resource as an alternative to importing and burning oil for electricity. To find out more about Kaheawa Wind's clean energy initiative, join us for a site visit.

Please wear comfortable clothing (closed-toe shoes and long pants), hat and sunscreen are recommended.



Maui Research & Technology Park | Hosted by Maui Economic Development Board (MEDB), Maui Brewing and Maui High Performance Computing Center

Maui's energy challenges have triggered creative solutions in business, military operations, and education. In this half-day of site visits at the Maui Research and Technology Park in Kihei, you will see and hear about the significant initiatives at the Maui High Performance Computing Center and the award-winning Maui Brewing Company and go hands-on with MEDB's Island Energy Inquiry™, the K-12 energy education program that prepares students for a clean energy future.

FRIDAY | March 18





William Alia | Deputy Director, Department of Hawaiian Home Lands (DHHL), and former Head of the Department of Land and Natural Resources (DLNR)

William J. Alia Jr., is currently the deputy Chairperson for the Department of Hawaiian Home Lands and the former Chairperson of the Department and Board of Land and Natural Resources. He has served on numerous appointed and volunteer boards and helped create the Papahānaumokuākea Marine National Monument among his many other accomplishments. He is an environmentalist, Hawaiian cultural practitioner and is dedicated to preserve Hawaii's land and ocean for future generations. William grew up on the Wai'anāe Coast, on the island of O'ahu, and worked on his family's cattle ranch. He learned to love the ocean fishing and diving near his great-grandmother's beach home, learning from her the values of respect for the ocean and conservation of its resources. He gained a degree in General Tropical Agriculture from the University of Hawai'i and for 24 years served as the harbormaster for the Wai'anāe Small Boat Harbor.



Lorraine Akiba | Commissioner, Hawaii Public Utilities Commission

Lorraine Akiba was appointed to the Hawaii Public Utilities Commission in January 2012. She worked previously in private practice as a law partner at McCorriston Miller Mukai MacKinnon LLP and Cades Schutte Flemming & Wright LLP. In addition, she headed the Environmental Practice Groups at both law firms with an emphasis on environmental and natural resources law. Lorraine previously served as the Director of the State of Hawaii Department of Labor and Industrial Relations and as Chair of the State of Hawaii Environmental Council. She is currently a member of the Advisory Council to the Board of Directors of the Electric Power Research Institute and has also held leadership positions in a number of professional organizations. A member of the Board of Directors of the National Association of Regulatory Utility Commissioners, Lorraine also serves on its Energy Resources and Environment Committee.



Jim Alberts | Senior Vice President, Customer Service, Hawaiian Electric Company

Jim Alberts joined Hawaiian Electric in 2012 as the Senior Vice President of Customer Service, coming to the company with more than 20 years of utility experience at Kansas City Power & Light (KCP&L) and Aquila. During his career, Jim has led teams and designed and implemented programs that focused on establishing top quality customer service and efficiency. While at KCP&L and Aquila as the Vice President of Customer Service, Jim was responsible for all customer contact channels, customer relations, quality assurance, e-services, billing, accounts receivable management, field services and meter reading. While at Aquila, he was a Lean Six Sigma Deployment Champion and certified Black Belt leading improvement teams across the company. He serves as a Board member of Hospice Hawaii, a non-profit organization dedicated to bringing hope, reducing fears and impacting lives in end-of-life care. He is also on the Hawaii Employers Council Board of Governors. Jim holds a Bachelor's degree in Business Administration from Minnesota State University and a Master's in Business Administration from Drake University.



Gavin Bade | Associate Editor, Utility Dive

Gavin Bade is a journalist currently focused on energy, electric utilities and the environment. He was the editor-in-chief of Georgetown's alt-weekly newspaper "The Georgetown Voice" and worked for a number of media publishers, including The American Prospect, NPR, the New America Foundation and WGUV. He is the author of numerous articles about the energy industry and related subjects. Currently, Gavin is working for Industry Dive where he manages daily operations of their Utility Dive website, an electricity sector trade publication. Gavin's long-term goal is to become an electric industry thought leader, bringing the best insights and actionable information to utilities, vendors, activists and policymakers. Gavin has a BS in Culture and Politics from the Walsh School of Foreign Service at Georgetown University.



David Bissell | President and CEO, Kauai Island Utility Cooperative

David Bissell is the President and CEO of Kauai Island Utility Cooperative (KIUC), having joined the Cooperative as chief financial officer in August 2006 and becoming KIUC's acting chief executive in June 2010. He brings more than 20 years of financial and electric utility management experience to KIUC. Before joining the Cooperative, Bissell served as manager of financial forecasting and reporting for Cinergy Corp (now part of Duke Energy). He began his career in the utility industry at Hoosier Energy Rural Electric Cooperative in Bloomington, Ind., where he spent six years as a tax and audit manager. Bissell was named the 2013 Utility CEO of the Year by the Solar Electric Power Association in recognition of KIUC's integration of solar electric power into its renewable energy portfolio.



Greg Callman | Business Development and Market Entry, Tesla Energy

Greg Callman manages global business development and market entry at Tesla Energy. He currently leads the company's efforts in Australia, New Zealand and the Pacific Islands. Greg also developed Tesla's Supercharger program in North America and Europe. Before joining Tesla, Greg served at the U.S. Department of Energy, ARPA-E, where he focused on commercializing advanced battery technology. Greg's background includes entrepreneurial ventures, corporate development, and advisory work in emerging markets. Greg studied chemistry at the University of Virginia, and energy policy at Johns Hopkins, SAIS. He is based in Palo Alto, California.



Michael Champley | Commissioner, Hawaii Public Utilities Commission

Mr. Champley was appointed commissioner with the Hawaii Public Utilities Commission (PUC) in September 2011, by Governor Neil Abercrombie, for a term to expire in June 2016. Commissioner Champley has over 40 years of experience analyzing, integrating and managing complex economic, public policy and technical issues facing the energy utility industry. Prior to his appointment, Commissioner Champley was a Maui-based senior energy consultant focused on clean energy resource integration in Hawai'i. Prior to re-locating to Hawai'i, Commissioner Champley was a senior executive with DTE Energy, a major electric and gas energy company where he held various executive positions including Senior Vice President - Regulatory Affairs and Senior Vice President - Power Supply. Commissioner Champley holds a Bachelor of Science in Electrical Engineering from the University of Dayton and a Master of Business Administration from Indiana University, with emphasis in Finance and Public Utility Economics and Regulation.



Michael Chang | Hawaii Energy, Chief Innovation Architect

Michael Chang is part of the Hawaii Energy team that is working to reduce the State of Hawaii's economic dependence on foreign fossil fuels. The team seeks consumer investments and operational changes that reduce and control energy use, enabling the maximum use of renewable energy. His role is to identify energy-saving opportunities in target markets and to develop programs that assist residential and commercial energy users. In addition, he addresses the common and specific barriers needed for each group to achieve energy efficiency in their homes and facilities. Michael has gained a broad range of energy experience from his 23 years in the energy industry. He has identified ways to cut energy costs, develop compelling projects, obtain viable financing, implement energy-saving actions and achieve energy-efficiency goals. Most importantly, he has pioneered how to maintain the persistence of savings. He has served as Honolulu Branch manager at Johnson Controls, Commercial Energy Efficiency Program manager at Hawaiian Electric Company and as a Seabee Construction Electrician in the U.S. Navy Reserve. Michael earned a Mechanical Engineering degree and an MBA from the University of Hawaii.



Colton Ching | Vice President, Energy Delivery, Hawaiian Electric Company

Colton Ching is responsible for the planning, design, construction, and maintenance of Oahu's transmission and distribution infrastructure. He has been with Hawaiian Electric for more than 25 years, serving in various roles in engineering, planning, strategy, operations, and construction. Colton has served in his current role since January 2013. Prior to that, he served in planning and system operation. In addition to his work at Hawaiian Electric, Colton serves on the Corporate Board of Directors of the Boys and Girls Club of Hawai'i, the Executive Board of the Aloha Council for the Boy Scouts of America, and on the State of Hawai'i Advisory Council on Emergency Management. Colton is also one of 13 inaugural cohorts in the Omidyar Fellows Leadership program. Colton was born and raised on the island of Maui and is a graduate of the University of Hawai'i at Manoa where he received a degree in Mechanical Engineering. He resides in Kane'ohe with his wife Vicky and their son Jacob.



Jennifer Chirico | Partner/President, Susty Pacific

Dr. Chirico is the president of Susty Pacific, a Hawaii-based firm focused on responsible business and sustainability consulting. She recently published the book, "Thinking Like an Island: Navigating a Sustainable Future in Hawaii" by UH Press. She is an international certified trainer for GRI Sustainability Reporting, is both Carbon Disclosure Project certified and LEED GA accredited, and is a Zero Waste Business Associate. Previously, Dr. Chirico was Executive Director of the Sustainable Living Institute of Maui at the University of Hawaii Maui College. She worked as a business consultant with Booz Allen Hamilton and as an investment consultant with Hewitt Associates. Dr. Chirico holds a Ph.D. in Environmental Policy, a Master's in Public Health, and a Bachelor of Science degree in Finance.



Murray Clay | Managing Partner, Ulupono Initiative

Murray Clay serves as managing partner of the Ulupono Initiative. Prior to joining Ulupono, Murray served as deputy chief investment officer of SDS Management LLC in Connecticut. He has more than a decade of experience in managing hedge fund and private equity portfolios. He led due-diligence as well as negotiated and structured direct investments in many industries, including energy, natural resources and biotechnology. Prior to his finance career, Murray served as an intelligence officer for U.S. Air Force Special Operations Forces for five years. A graduate of the U.S. Air Force Academy, he holds a Bachelor of Science degree in International Affairs, with a minor in Japanese. Murray earned his Master of Business Administration from the University of Chicago's Graduate School of Business (now Booth School of Business). He serves on the Oahu Economic Development Board and is an active member of his church. He and his wife Jodi have five children.



Jamie Cook | Director, Renewable Projects, Maui Electric

Jamie Cook has worked at Maui Electric since 2011. He is responsible for the electric utility administration of customer and utility-scale renewable energy projects on the islands of Maui, Moloka'i, and Lana'i. Interconnected customer renewable energy systems consist of approximately 9300 photovoltaic systems totaling over 72 megawatts (MW) in a service territory of 70,000 customers. Utility-scale renewable projects include three wind farms totaling 72 MW. Jamie studied Sustainable Development at Harvard University as an undergraduate and is a recent graduate of Arizona State University's Executive Master's for Sustainability Leadership program.



Kyle Datta | General Partner, Ulupono Initiative

Kyle Datta is general partner of Ulupono Initiative, a Hawaii-focused for-profit impact investment firm. He is working to improve the quality of life in Hawaii through sustainable investments in three key areas: locally produced food, renewable energy, and waste reduction. Previously, Kyle was the CEO of U.S. Biodiesel Group, a national biodiesel firm funded by private equity; Managing Director of Research and Consulting at the Rocky Mountain Institute; and a Vice President at Booz Allen Hamilton, where he served as managing partner of the firm's Asia energy practice and head of the U.S. utilities practice. Kyle received a Master's degree in Public and Private Management from the Yale School of Organization and Management and a Master's degree in Environmental Science and Resource Economics from the Yale School of Forestry and Environmental Studies. He is co-author of the RMI books "Winning the Oil End Game" and "Small is Profitable." Kyle serves on the board of directors for Blue Planet Foundation, Hawaii BioEnergy and Parker Ranch.



Frank De Rego Jr. | Director of Business Development Projects, Maui Economic Development Board, Inc. (MEDB)

Frank De Rego has over 30 years of experience in education and the nonprofit sector. Prior to joining MEDB, he developed curricula, trained and coordinated graduate engineering teaching assistants, and, for a time, was national coordinator at Purdue University for a program called Engineering Projects in Community Service. At MEDB, De Rego has provided leadership in the development of the Maui County Model for Energy and Water in collaboration with the Millennium Institute. He earned a bachelor's degree from the University of San Francisco with a double major in Philosophy and Religious Studies; a Master's Degree in Religious Studies from Katholieke Universiteit Leuven in Leuven, Belgium; and a Master's of Science Degree in Sociology from Purdue University, West Lafayette, Indiana.

THINK LOCAL. ENERGIZE GLOBAL.

The **Hawaii State Energy Office** is committed to making Hawaii a trailblazing model for global energy transformation with aggressive clean energy goals and groundbreaking, clean tech investments.



Alex de Roode | Executive Director, Sustainable Living Institute of Maui (SLIM), UH Maui College

Alex de Roode is the executive director of the Sustainable Living Institute of Maui (SLIM) at the University of Hawaii Maui College. As Executive Director, he develops and directs SLIM programs and projects, including workforce development training and grant-funded programs in various areas of sustainability. He is involved in a wide range of community outreach and engagement activities related to increasing people's understanding of sustainability and how it can be adopted and implemented at both organizational and individual levels. He regularly works with individuals and organizations from the public, private, educational, government and non-profit sectors and presents to audiences on a wide range of sustainability-related topics. Alex has a Master of Science degree in Bioresource Engineering from McGill University. He is a Certified Energy Manager (CEM) and a LEED AP Operations and Maintenance Manager. Alex's expertise lies at the confluence of energy, agriculture, natural resources management, sustainability planning and assessment, entrepreneurship, and education and training.



Mark Duda | President, Hawaii PV Coalition

Mark Duda is a leading member of Hawaii's energy business and policymaking community. In 2009 he co-founded two of Hawaii's largest solar contracting firms, Distributed Energy Partners and RevoluSun LLC, which together have designed and built more than 50 MW of PV in the state. Duda is also President of the Hawaii PV Coalition and was President of the Hawaii Solar Energy Association from 2008 to 2012. In these roles he is active in both legislative and regulatory policymaking on a wide variety of energy issues. Duda also served in appointed positions on statewide bodies including the Hawaii Economic Development Task Force and the Hawaii DLIR's Steering Committee for Renewable Energy Workforce Development. He has been recognized as the Hawaii Venture Capital Association's Cleantech Entrepreneur of the Year, and received the Governor of the State of Hawaii's Innovation Award.



Mark Glick | Administrator, Hawaii State Energy Office, Department of Business, Economic Development & Tourism

Mark Glick is Administrator of the Hawaii State Energy Office, a post he has held since October of 2011. As Administrator, Mark leads Hawaii's internationally regarded clean energy transformation and innovation efforts. Some highlights of his tenure include passage of the nation's first 100% Renewable Portfolio Standard (RPS), exceeding Hawaii's interim 2015 targets for Hawaii's RPS and energy efficiency portfolio standard. Under his guidance, Hawaii led the nation for four consecutive years in the per-capita value of energy savings performance contracts. Prior to Mark's tenure with the State Energy Office, he was a senior advisor to the Texas Land Commissioner focusing on energy, a successful business owner dedicated to reducing urban air pollution in the U.S. and abroad, and head of operations and economic development for the Office of Hawaiian Affairs. Mark is Vice Chair of the Hawaii Green Infrastructure Authority and serves on the boards of the National Association of State Energy Officers and the Washington Place Foundation. He also served as Chair of the Executive Committee of the Hawaii Chapter of the Sierra Club. Mark has a Master of Science in Public Management & Policy from Carnegie Mellon University and a Bachelor of Arts in Mathematics from Lamar University.



James Gomes | Operations Manager, Ulupalakua Ranch Inc.

James A. (Jimmy) Gomes, born and raised on Maui Island, is the Operations Manager of Ulupalakua Ranch, Inc. where he stewards 18,000 acres. As a local paniolo (cowboy) and long-time rancher, Mr. Gomes understands the economic, environmental, and energy challenges of large scale agriculture. As ranch operations manager, he was instrumental in fostering the development of the Auwahi Wind Farm on ranch land in collaboration with Semptra U.S. Gas & Power and BP Wind Energy - a facility that provides 21MW of electricity to Maui's power grid. Mr. Gomes currently serves as a member on the Board of Land and Natural Resources for the State of Hawaii.



Richard Ha | Co-Founder, Hawaii Island Energy Cooperative

Richard Ha, owner of Hamakua Springs Country Farms, is president of the Hawaii Island Energy Cooperative, a non-profit cooperative association formed by community and business leaders on Hawai'i Island. The cooperative explores the potential merits of a community-based, cooperative ownership structure for electric utility service on the Big Island. Richard is also a member of the U.S. Department of Agriculture's Fruit and Vegetable Industry Advisory Committee and its Western Region Sustainable Agriculture Research and Education Committee. He is a member of the State Board of Agriculture, the Kohala Center and the Hawai'i Island Economic Development Board. In 2011, Richard was honored as a University of Hawai'i distinguished graduate. He has been inducted into the Shidler College of Business Hall of Honor and named Farmer of the Year by the State of Hawai'i. His posts about farming, renewable energy self-sufficiency, the islands' food security and more can be viewed on his blog at hamakuasprings.com.

**Brandon Hayashi | Program Manager, OpTerra Energy Services**

Brandon Hayashi is the program manager for OpTerra Energy Services Hawai'i. He is part of a collaborative team implementing energy and sustainability solutions combined with a standards-aligned school curriculum. Through a partnership program with the Hawai'i Department of Education, the program serves 175,000+ students at 256 public schools across six islands. Brandon was the former president of the Rebuild Hawai'i Consortium, past co-chair of the Energy Efficiency Working Group at the Hawai'i Energy Policy Forum, and previous board member at Kanu Hawai'i, where he co-chaired the inaugural Kanu Energy Challenge. He is a past member of the Pacific Business News' 2013 "Forty Under 40" class and was a featured speaker at the 2015 TEDx Honolulu event. Brandon has a Master of Science degree focused on Japanese Management and Energy Efficiency from the University of London (SOAS), and an International Relations and Japanese Studies Bachelor of Arts degree from Hope College in Holland, Michigan.

**Shelee Kimura | Vice President, Corporate Planning and Business Development, Hawaiian Electric Co.**

Shelee Kimura was named Vice President of Corporate Planning and Business Development for the Hawaiian Electric Company in 2014. She oversees the areas of strategic planning, business development, renewable acquisition, grid technologies, demand response and forecasting. In this role, Shelee has provided leadership and oversight for Hawaiian Electric's strategic plan and its Transformation Office. She also serves as a chief integration officer for the pending merger with NextEra Energy. Shelee joined Hawaiian Electric from parent company Hawaiian Electric Industries (HEI) where she was the manager of Investor Relations and Strategic Planning, as well as Director of Corporate Finance and Investments. Prior to HEI, she was a consulting manager at Arthur Andersen and its successor firm, KMH LLP. Shelee graduated summa cum laude with a Bachelor of Business Administration degree from the University of Hawai'i at Manoa where she was a Presidential Scholar. She is a graduate of the Advanced Management Program of the Wharton School at the University of Pennsylvania. She also serves on the audit committee of Kamehameha Schools and the boards of 'Olelo Community Media and Hawai'i Cord Blood Bank.

**Kelly Takaya King | Vice President and Chief Communications Officer, Pacific Biodiesel Technologies; Co-Founder and Chair, Sustainable Biodiesel Alliance**

Kelly Takaya King, Vice President of Pacific Biodiesel Technologies, LLC, co-founded the renewable energy company with her husband, Robert King, in 1996. Recognized as an industry pioneer, Pacific Biodiesel was created to alleviate the disposal of waste cooking oil at Maui's landfill and became the first commercial biodiesel company in the U.S. As Director of Marketing and Communications, Kelly has helped develop and sell 13 biodiesel plants built by Pacific Biodiesel in the U.S. and Japan. The company's community-based biodiesel model has become a standard for the sustainable renewable fuel industry. In 2006, together with Daryl Hannah and Willie and Annie Nelson, Kelly co-founded the Sustainable Biodiesel Alliance, a national non-profit organization that is developing a certification process for sustainable biodiesel practices. In Hawaii, she has been active as a board member with many local non-profits and has served as an elected member of the Hawaii State Board of Education, representing Maui County from 1994-98. Kelly currently serves as a board member of Hawaii Renewable Energy Alliance, High Technology Development Corporation, UHMC Sustainable Sciences Management Advisory Council and continues as Chair of the Sustainable Biodiesel Alliance.

**Brendan Kirby | Private Consultant, ConsultKirby.com**

Brendan Kirby is a private consultant with numerous clients including National Renewable Energy Laboratory, AWEA, Oak Ridge National Laboratory, EPRI and others. He served on the NERC Standards Committee. He recently retired as a senior researcher with the Oak Ridge National Laboratory's Power Systems Research Program. Brendan has 37 years of electric utility experience and has published over 150 papers, articles and reports on ancillary services, wind integration, restructuring, the use of responsive load as a bulk system reliability resource, and power system reliability. He has a patent for responsive loads providing real-power regulation and is the author of a NERC certified course "Introduction to Bulk Power Systems: Physics, Economics and Regulatory Policy". Brendan is a licensed Professional Engineer with a Master of Science degree in Electrical Engineering (Power Option) from Carnegie-Mellon University and a Bachelor of Science degree in Electrical Engineering from Lehigh University. Publications are available at www.consultkirby.com, e-mail kirbybj@ieee.org.

**Jonathan Koehn | Regional Sustainability Coordinator, City of Boulder**

Jonathan Koehn is the Regional Sustainability Coordinator for the City of Boulder, Colorado, where he oversees the city's sustainability agenda, specifically in relation to climate action and waste reduction, but more broadly across the complete spectrum of the city's sustainability goals. Most recently, Koehn was the Environmental Affairs Manager for the city. He came to Boulder with more than 10 years of experience working with state, regional, and local governments and its constituencies domestically and internationally to develop strategic and tactical solutions to energy, economic and climate challenges. Since 2009, Koehn has been focused on the various aspects of Boulder's energy efforts, and primarily, the city's municipalization exploration project.



Olin Lagon | CEO, Shifted Energy

Olin Lagon is CEO and founder of Shifted Energy, a firm pioneering the use of water heaters as grid-level energy storage devices. He is the former Executive Director of Kanu Hawaii, one of Hawaii's largest grassroots organizations with nearly 20,000 members statewide. He is also founder and chairman for one of Hawaii's first B Corps, Asio Corporation. Olin is a technology innovator and social entrepreneur with a long-time passion for sustainability. He co-founded several companies and helped invent pioneering technologies in diverse fields including content localization and crowdfunding. He co-authored ten technology patents and his inventions have been adopted by many Global 1000 companies as well as organizations like MIT and the Olympics. His startup ChipIn created the first commercial crowdfunding system and directed nearly \$100 million to causes worldwide. Half of Olin's life has been spent in service including the U.S. Navy, the Peace Corps and several nonprofits. Born and raised in Hawaii, Olin spent his childhood in public housing and learned firsthand about the challenges of low opportunities.



Dawn Lippert | Co-founder and Director, Energy Excelsator

Dawn Lippert is the co-founder and director of the Energy Excelsator, a startup program dedicated to solving the world's energy challenges, starting in Hawaii. Since 2009, the program helps innovative energy companies succeed in Hawaii and the Asia Pacific with funding up to \$1M per company and strategic relationships. Prior to 2009, Dawn's career included being a management consultant with Booz Allen Hamilton's alternative energy team in Washington D.C., helping to implement the Hawaii Clean Energy Initiative and working on clean energy in India, Africa, and Latin America. Dawn is currently active on several boards including being chair of the HCEI Advisory Board; founder and board member of WiRE (Women in Renewable Energy); member of the Clean Energy Incubator Network Advisory Board; member for the Pacific Asian Center for Entrepreneurship (PACE) Advisory Board at the University of Hawaii; and a board member of the Entrepreneurship Foundation of Hawaii and the YWCA of Oahu. Dawn participated in the 2015 cohort of the noted Omidyar Fellows leadership program. She has a Bachelor of Arts in Environmental Studies and a Master of Science in Forestry and Environmental Management from Yale University.



Marco Mangelsdorf | Co-Founder, Hawaii Island Energy Cooperative

Dr. Marco Mangelsdorf has been in the solar energy and renewable energy field since 1978. He has worked on projects and attended conferences and trade shows in North America, Hawaii, Europe and Asia. Since 2000 he has been with ProVision Solar, Inc., based in Hawaii, purchasing the company from Hawaiian Electric Industries in 2003. Since 2015 Dr. Mangelsdorf has been a director and spokesperson for the Hawaii Island Energy Cooperative. He has authored numerous articles on solar energy since the 1980's and is a frequent guest on Think Tech Hawaii. In October 2012 Dr. Mangelsdorf testified in Washington, D.C. before the U.S. International Trade Commission. He received his Ph.D. from the University of California and taught on the politics of energy there and at the University of Hawaii.



Kris Mayes | Professor of Practice and Director of the Utility of the Future Center, Arizona State University

Kris Mayes serves as the director of the Utility of the Future Center (UFC) and the Energy Policy Innovation Council at Arizona State University. She is also a professor of Utility Law and Policy at the Global Institute of Sustainability and the School for the Future of Innovation in Society. Kris served as a member of the Arizona Corporation Commission from 2003 to 2010. While there she collaborated in the following initiatives: authoring the Arizona Renewable Energy Standard which contains one of the most aggressive distributed generation requirements in the country; establishing one of the nation's most ambitious Energy Efficiency Standards, requiring utilities to sell 22% less energy by 2020; and helping craft the state's Solar Net Metering Standard. Kris currently sits on the Board of Directors of the Energy Foundation, the Vote Solar Initiative, and the Southwest Energy Efficiency Project (SWEET). She also serves on NREL's Energy Systems Integration Facility Technical Advisory Board and the ARPA-E Braintrust in Washington, D.C. She travels across the country speaking about topics ranging from the utility of the future, to the design of energy law and policy, with a focus on energy efficiency and renewables. Most recently, Kris testified on behalf of the County of Hawaii in the proposed HECO/NextEra merger case.



Doug McLeod | Founder of DDK Energy Services LLC, Chair of the Program Committee for the Maui Energy Conference, Chair of the Energy Committee of the Maui Tomorrow Foundation

Doug McLeod lives on Maui and has been active in renewable energy and environmental issues for more than 25 years as an attorney, developer and former Energy Commissioner for the County of Maui. He holds a degree in Political Science from Johns Hopkins University and a law degree from the University of Kansas School of Law. As an attorney on the mainland, Doug represented regulated and unregulated energy companies with an emphasis on the Clean Air Act compliance, remediation and acquisitions. After moving to Hawaii in 2002, he developed several energy-efficient commercial buildings on Maui and the first Feed-in Tariff system in Hawaii. While serving as Energy Commissioner for the County of Maui, he oversaw the development and installation of solar PV at 221 County facilities including the largest solar PV system on Maui. He also led the effort to install the first EV quick charger on Maui. Currently Doug offers specialized advice on EV and renewable energy issues for clients of DDK Energy Systems. He also volunteers his time on the Board of Directors for Maui Tomorrow and as Chair of the Program Committee for the Maui Energy Conference.



Hermina Morita | Chair (Retired), Hawaii Public Utilities Commission

Hermina Morita was Chair of the Hawaii Public Utilities Commission (PUC) from March 2011 to January 2015. From 1996 to her PUC appointment, Ms. Morita was a member of the Hawaii State House of Representatives, serving eight two-year terms. From 1999 to 2011, she was Chair of the House Committee on Energy & Environmental Protection, leading the adoption of many of the state's significant energy policies that shape Hawaii's present energy landscape. As of March 2015, Ms. Morita retired from public service and is now a part-time independent consultant. She resides in Hanalei on the island of Kauai where she pens a blog called "Energy Dynamics."



Alicia Moy | President and Chief Executive Officer, Hawaii Gas

Alicia E. Moy became president and chief executive officer of Hawaii Gas in May 2013. Under her leadership, the company is committed to supporting the positive transformation of Hawaii's energy landscape. She is striving to achieve the state's renewable goals and her energy vision in Hawaii is to support, develop, and collaborate on clean energy solutions while reducing the high cost of energy for customers. Previously, Alicia was Senior Vice President of Macquarie Infrastructure Company (MIC). At Macquarie, Alicia oversaw management of several utility companies, corporate strategy, and funding. She is on the Board of Directors of Macquarie Renewable Energy Holdings, a portfolio of eight wind and solar generation facilities producing over 260 megawatts of renewable energy in the U.S. Alicia is a member of several professional, community and leadership organizations. These include the Chamber of Commerce of Hawaii, Aloha United Way, the March of Dimes, the Western Energy Institute, the Hawaii Clean Energy Initiative Advisory Board, and Women in Renewable Energy. Her professional affiliations include Women Corporate Directors, Military Affairs Council, Hawaii Business Roundtable and the Young Presidents' Organization. Alicia is married and has two young sons. They are the reason why she is working hard with other leaders to create workable forward-thinking paradigms that will create a sustainable future for all who call Hawaii their home.



Sebastian "Bash" Nola | Utility Consultant

Bash Nola is a renewable-energy and utility consultant who brings more than 45 years of management experience in the energy industry to the conference. He spent 31 years of his career in key management positions at the Southern California Edison Company, the third largest investor-owned electric utility in the nation. Bash managed and directed the activities of Edison's generation planning function and their renewable and alternative generation resource program. Today, he serves as an independent consultant to the wind and renewable energy industry and has been involved in the development of Hawaii's first wind generating facilities. Bash consults for Blue Planet Foundation and has participated in the State of Hawaii PUC's Reliability Standards Working Group and in HECO's Integrated Resource Planning Process as a PUC-nominated Advisory Group member.



Emilia Noordhoek | Executive Director, Sustainable Molokai

Emilia Noordhoek is the Executive Director and co-founder of Sustainable Molokai with 20 years of experience in sustainable building practices, environmental compliance, and project management. Previously, she was the Resource Development and Marketing Director for Molokai Habitat for Humanity. Some of her many accomplishments include project management for the first Bamboo off-grid house for Habitat for Humanity International, the organization of the 2009 Sustainable Molokai conferences, and the creation of the Molokai School Garden Network. In her current position, Emilia devised and delivered Sustainable Molokai's energy initiatives, including curriculum development to create jobs in energy audits and efficiency. She also researched and co-wrote both the Molokai Agricultural Needs Assessment as well as the Molokai Energy Assessment. She is President and co-founder of the Molokai Arts Center. Emilia holds a Bachelor of Fine Arts from the University of Oregon and a Master of Real Estate Development from Portland State University. She is an Accredited Professional (AP) in Leadership in Energy and Environmental Design (LEED). Emilia is a 2015 graduate of the Omidyar Fellows Program in leadership and professional development.



Bill Ritter, Jr. | Founder and Director, Center for the New Energy Economy (CNEE), Colorado State University and Former Governor of Colorado

Bill Ritter, Jr. is the founder and Director of the Center for the New Energy Economy (CNEE) at Colorado State University, which launched on February 1, 2011. The Center, working directly with governors, legislators, regulators, planners, policymakers, and other decision makers, provides technical assistance to help officials create the policies and practices that will facilitate America's transition to a clean-energy economy. Bill was elected as Colorado's 41st governor in 2006 and built consensus to tackle some of the state's biggest challenges. During his four-year term, he established Colorado as a national and international leader in clean energy by building a new energy economy. He signed 57 new energy bills into law, including a 30% Renewable Portfolio Standard and a Clean Air Clean Jobs Act that replaced nearly a gigawatt of coal-fired generation with natural gas. In total, the Colorado new energy economy created thousands of new jobs. Bill is a member of the Board of Directors of the Energy Foundation and a Senior Fellow and member of the Board of Directors of the Advanced Energy Economy Institute. He earned his Bachelor's Degree in Political Science from Colorado State University in 1978 and his law degree from the University of Colorado in 1981. With his wife Jeannie, Bill operated a food distribution and nutrition center in Zambia. He then served as Denver's District Attorney from 1993 to January 2005. The Ritter's have four children: August, Abe, Sam, and Tally.



Richard Rocheleau | Director, Hawaii Natural Energy Institute (HNEI)

Richard Rocheleau received his BChE and PhD in Chemical Engineering from the University of Delaware and a MS in Ocean Engineering from the University of Hawaii. Following his graduate work, Dr. Rocheleau led the reactor design group at the Institute of Energy Conversion, University of Delaware, developing new processes for the production of thin-film photovoltaics. He joined the faculty of the Hawaii Natural Energy Institute at the University of Hawaii at Manoa in 1988 and was appointed Director in 2000. As Director he has emphasized the formation of public-private partnerships for the development, testing, and evaluation of alternative energy technologies. Current efforts include finding solutions to the high penetration of grid-connected renewable generation technologies including smart grid technology and the development of alternative fuels. Dr. Rocheleau also serves as the PI for the University of Hawaii's Marine Renewable Energy Center focused on deployment and testing of grid-connected wave energy technology.



Luis Salaveria | Director, Department of Business, Economic Development and Tourism, State of Hawaii

Luis P. Salaveria is Director of the State of Hawaii Department of Business, Economic Development and Tourism (DBEDT), a position he has held since December 2014. As Director, Luis leads DBEDT's efforts to achieve a Hawaii economy that embraces innovation and is globally competitive and dynamic, providing opportunities for all Hawaii's citizens. Luis most recently served as the State's Deputy Director of Finance from 2011 to 2014, where he assisted in the planning, design and management of the state's annual \$12 billion operational and \$3 billion capital improvement budgets. He brings more than 20 years of public and private sector experience to the position, having worked as the Finance Manager for Kaiser Permanente Hawaii from 2001 to 2011, and as a Budget and Financial Analyst with the State Department of Defense from 1997 to 2001. Luis has demonstrated a record of achievement and success in both growth and turnaround environments. He holds a degree in Economics from the University of Hawaii at Manoa.



Jared Stigge | Vice President, C.H. Guernsey & Company

Jared Stigge has been Senior Vice President at C.H. Guernsey & Company since 1999. He leads a diverse team providing post-award privatization support to the Federal government, primarily at three locations in Alaska. He currently focuses upon public-private partnerships and has led his company's team to evaluate, negotiate and manage transactions, some valued in the billions of dollars. With a background in economics and law, his focal point is life-cycle cost comparisons, price negotiations and contract analysis to advance his client's long-term interests. Jared works on public utility regulation and the development and validation of renewable energy projects. At the 2016 Maui Energy Conference he will present "The Guernsey Report: An Analysis of Alternative Utility Models for Maui County."



Craig Swift | Director of Business Development Center, Maui Economic Opportunity, Inc. (MEO)

Craig Swift has over 30 years of experience working with small businesses. This experience includes business ownership, business financing, business training and community economic development in Maui County. Craig's current position is that of Director of MEO's Business Development Center. The Center works with hundreds of start-up businesses each year. In 2013 Craig was honored by the Small Business Administration (SBA) as the State of Hawaii's Home-Based Business Champion of the Year. Craig has his MBA from the University of Hawaii and an undergraduate degree from the University of Washington. He has also been a lecturer at UH-Maui College.



Josh Teigiser | Senior Manager - Development, Sempra U.S. Gas and Power

Josh Teigiser, a Senior Manager of Development for Sempra U.S. Gas and Power, is responsible for leading greenfield efforts as well as mergers and acquisitions (M&A) for the company's Renewables Division. While serving in this role, he has successfully led the development of multiple utility-scale (100 megawatts+) renewable energy projects. He is currently managing the development of approximately one gigawatt of new utility-scale solar and wind power generation. Josh has taken a leading role in the company's initiative in energy storage. Prior to joining Sempra U.S. Gas and Power, Josh worked at San Diego Gas and Electric Company (SDG&E), another Sempra Energy subsidiary, for six years. Prior to working for the Sempra Energy family of companies, he led Southern California development efforts for Lennar Homes. Josh has over 10 years of experience in the energy industry. His job roles have been focused on leading new transmission and substation projects; renewables project development, energy storage, and M&A. Josh holds a Bachelor's degree in Environmental Studies and Land Planning from the University of California at Santa Barbara (UCSB). He is currently active in several solar, wind and energy storage industry associations.



Boris von Bormann | CEO, Sonnen Inc

Boris von Bormann, born in Hamburg, Germany, has been in the international trade industry for over 17 years and in the solar industry for over eight years. He is the CEO for Sonnenbatterie Inc. (www.sonnen-batterie.com), the pioneer and manufacturer of energy storage solutions. Sonnenbatterie GmbH is headquartered in Bavaria, Germany, and its U.S. headquarters is located in Los Angeles. In addition to his current CEO position with Sonnenbatterie Inc., Boris has ownership in SK Solar, Inc., a residential and commercial solar installation and engineering company with headquarters in Los Angeles. SK Solar operates nationwide with its parent company located in Germany (www.sksolar-usa.com). Prior to opening SK Solar, Boris was the director for Solteature, Inc., a U.S. subsidiary for the German CIGS solar module manufacturer Solteature GmbH. In 2002 Boris founded Accessio, an independent consulting company that focuses on cross-cultural business aspects. Through his position with Accessio, he held various interim positions in IT, film and entertainment and biotechnology industries. Boris founded the German American Business Association, Southern California Chapter, a non-profit organization in Southern California. Boris holds a dual-citizenship (Germany and USA) and currently lives in Los Angeles, California.



Jon Wellinghoff | Energy Law Attorney, Stoel Rives LLP

As the longest-serving chairman of the Federal Energy Regulatory Commission (FERC, 2009-2013), Jon Wellinghoff is known for his international expertise and thought leadership in energy policy, electric markets, and the interface of disruptive energy systems with traditional utility structures. In 2013 he became a partner at Stoel Rives, where he represents an array of clients in emerging energy technology fields including energy storage, demand response, big energy data analytics, and distributed generation. While at FERC Jon worked to formulate new policies and rules to improve electric market efficiency and integrate new disruptive energy resources into wholesale energy markets. One of those rules, Order 745, providing for equal payment for customer-sited demand response in wholesale energy markets was recently affirmed by the U.S. Supreme Court. Since joining Stoel Rives, Jon has authored numerous articles on subjects including reforming retail energy market structures and the legal right to engage in distributed generation. Jon is a sought after lecturer and featured speaker on innovative future energy policies and has lectured widely at such diverse venues as Stanford, MIT, Google, and the Beijing Energy Club.



Leslie Wilkins | Vice President, Maui Economic Development Board (MEDB), Founder and Director, Women in Technology Project

In October 1999, Ms. Wilkins was hired to design, launch, and lead implementation of MEDB's Women in Technology Project, a national pilot and demonstration project, created to engage more girls, women, Native Hawaiians and other underrepresented groups into the Science, Technology, Engineering and Math (STEM) pipeline. In June 2000, she was elected by MEDB's Board of Directors to be Vice President, leading MEDB's STEM education to workforce initiatives and overseeing the statewide expansion of the pilot program to an annual reach of more than 40,000 participants. She is principle investigator for a \$15 million federal funding portfolio, including grants from 8 different federal agencies. Ms. Wilkins is an experienced advocate for women, workplace diversity and equity issues. She has served in state and national leadership roles with the Business & Professional Women's Organization (BPW/USA) for more than two decades. Elected to BPW/USA national office in 1997, she has served on the Executive Committee, was elected National President, and became BPW Foundation Chair through 2002. Ms. Wilkins currently serves on many state and national boards and commissions including chair of the State Commission on the Status of Women; member of the board of directors for the National Association of Commissions for Women; chair of the Maui County Workforce Board, member of the state Workforce Development Council; member of the University of Hawaii's College of Engineering Dean's Advisory Council; board member of the YWCA of Honolulu, and a national trustee for the BPW/USA Foundation.

MAHALO TO THE PROGRAM COMMITTEE

Holly Benz

Vice President, Schneider
Corporation

Colton Ching

Vice President,
Energy Delivery,
Hawaiian Electric
Company

Frank De Rego Jr.

Director of Business
Development Projects,
Maui Economic
Development Board, Inc.

Mark Glick

Administrator, Hawaii
State Energy Office,
Department of Business,
Economic Development
& Tourism

James "Jay" Griffin

Chief of Policy and
Research, Hawaii Public
Utilities Commission

Jonathan Koehn

Regional Sustainability
Coordinator, City of
Boulder

Doug McLeod

Program Committee
Chair, Maui Energy
Conference

Sebastian "Bash" Nola

Utility Consultant

LOWER ENERGY COSTS, COMMUNITY INVESTMENT AND 100% RENEWABLE ENERGY.



The more people learn about what
this merger has to offer Hawai'i, the
more people are inclined to support it.



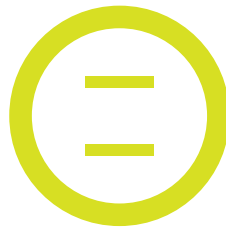
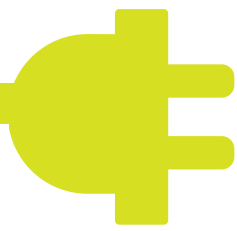
Increased investment in our electric grid and other critical infrastructure.
More affordable and reliable electricity. Greater control for customers over
their energy usage and costs. Expanded engagement with community
members and business leaders.

These are just some of the reasons a growing number in our community
support the merger between Hawaiian Electric and NextEra Energy.

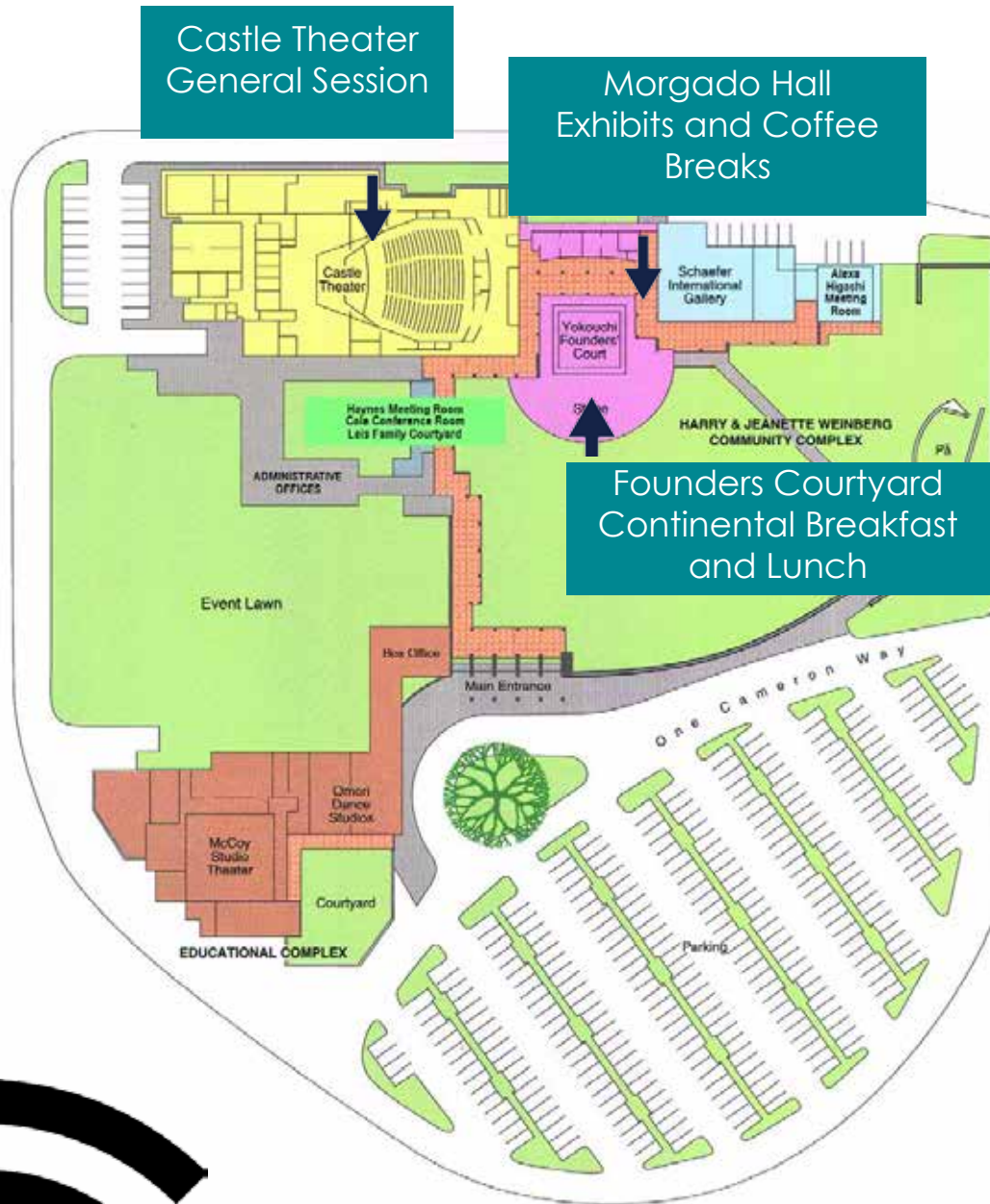
Hawaiian Electric
Maui Electric
Hawai'i Electric Light

NEXTERA
ENERGY

To learn more, visit ForHawaiiFuture.com



VENUE



**GET
CONNECTED**

Network Names
NRG1 (Castle Theater)
NRG2 (All Locations)

Password
gogreen

Join the Conversation

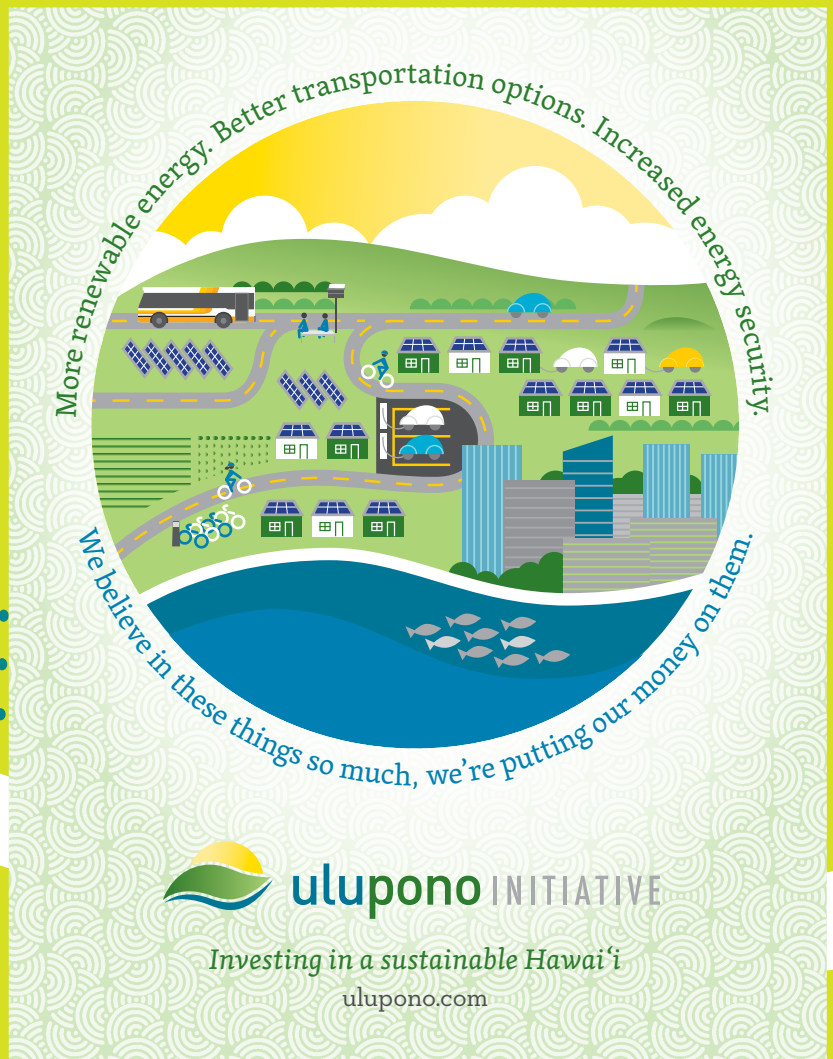


DOWNLOAD THE NETWORKING APP

Head to the iTunes App Store or Google Play and download the FREE app!



Need help connecting? Visit the registration desk





Building Pathways to Innovation, Jobs, and Opportunity



www.medb.org | 1.808.875.2300